

How to keep the academic and scientific distance learning for students during the Coronavirus Pandemic

Rodolfo Azevedo

UNIVESP - Brazil

CONASENSE 2021

Brazil in the World

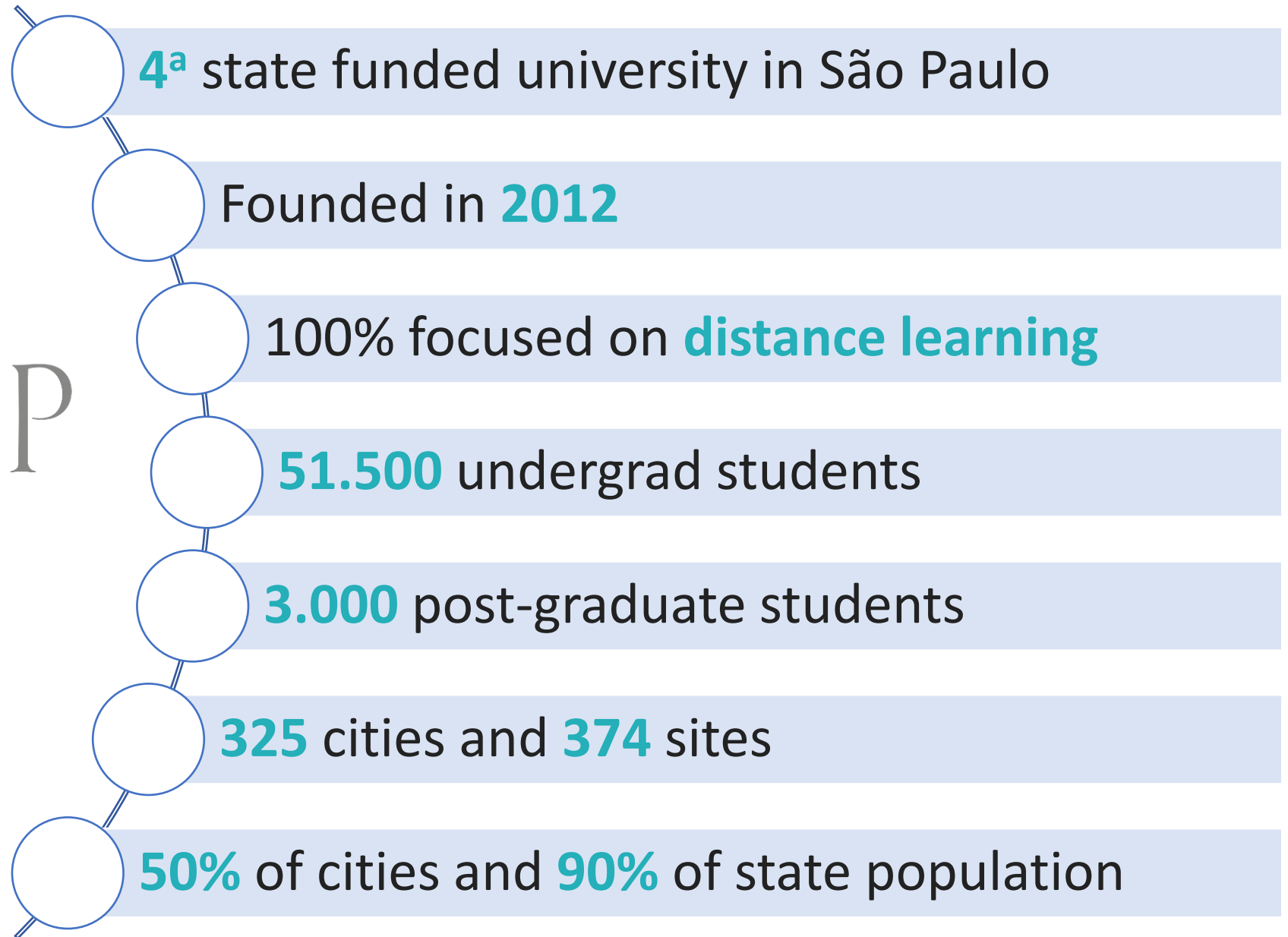


212 million people

State of São Paulo



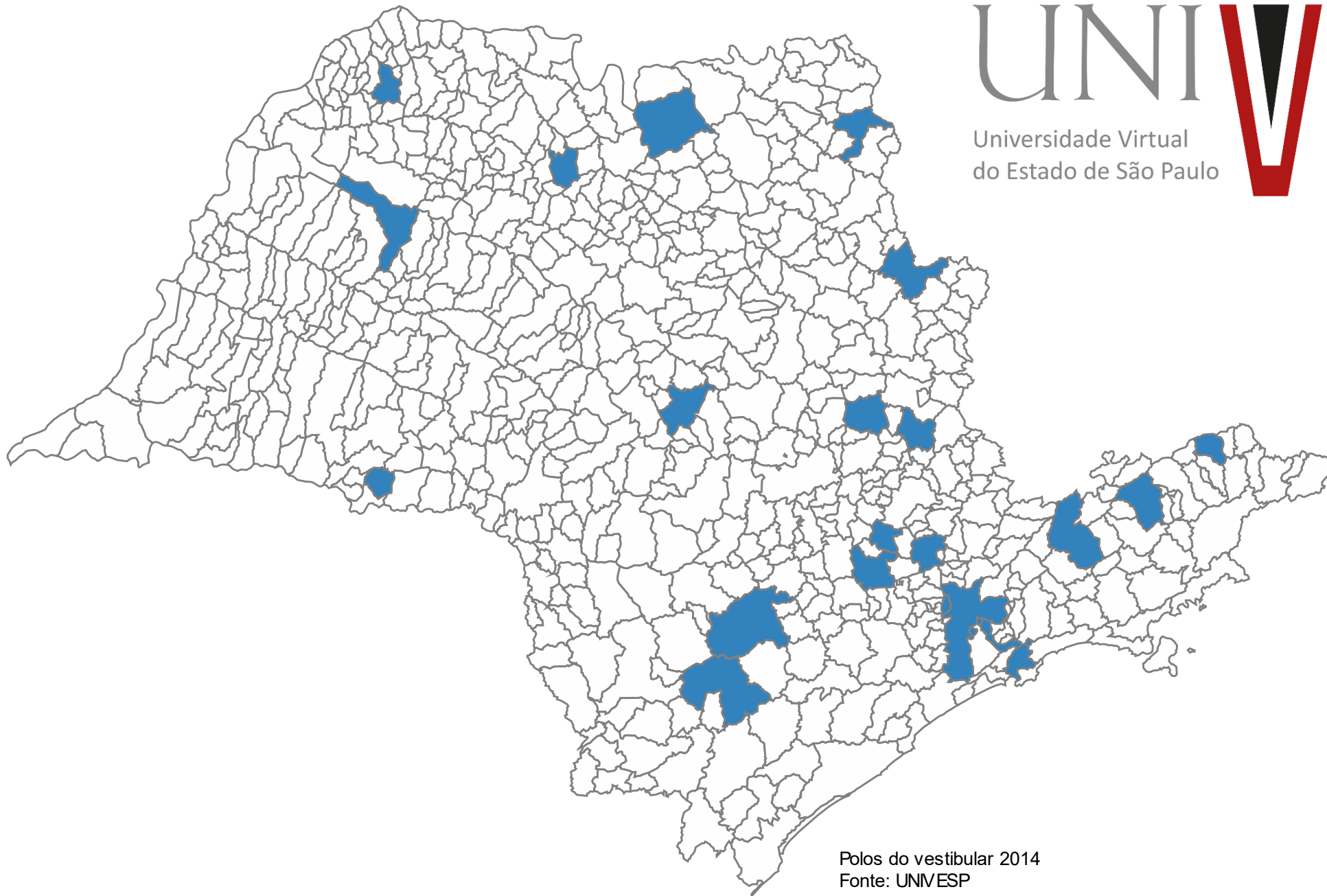
44 million people
645 cities





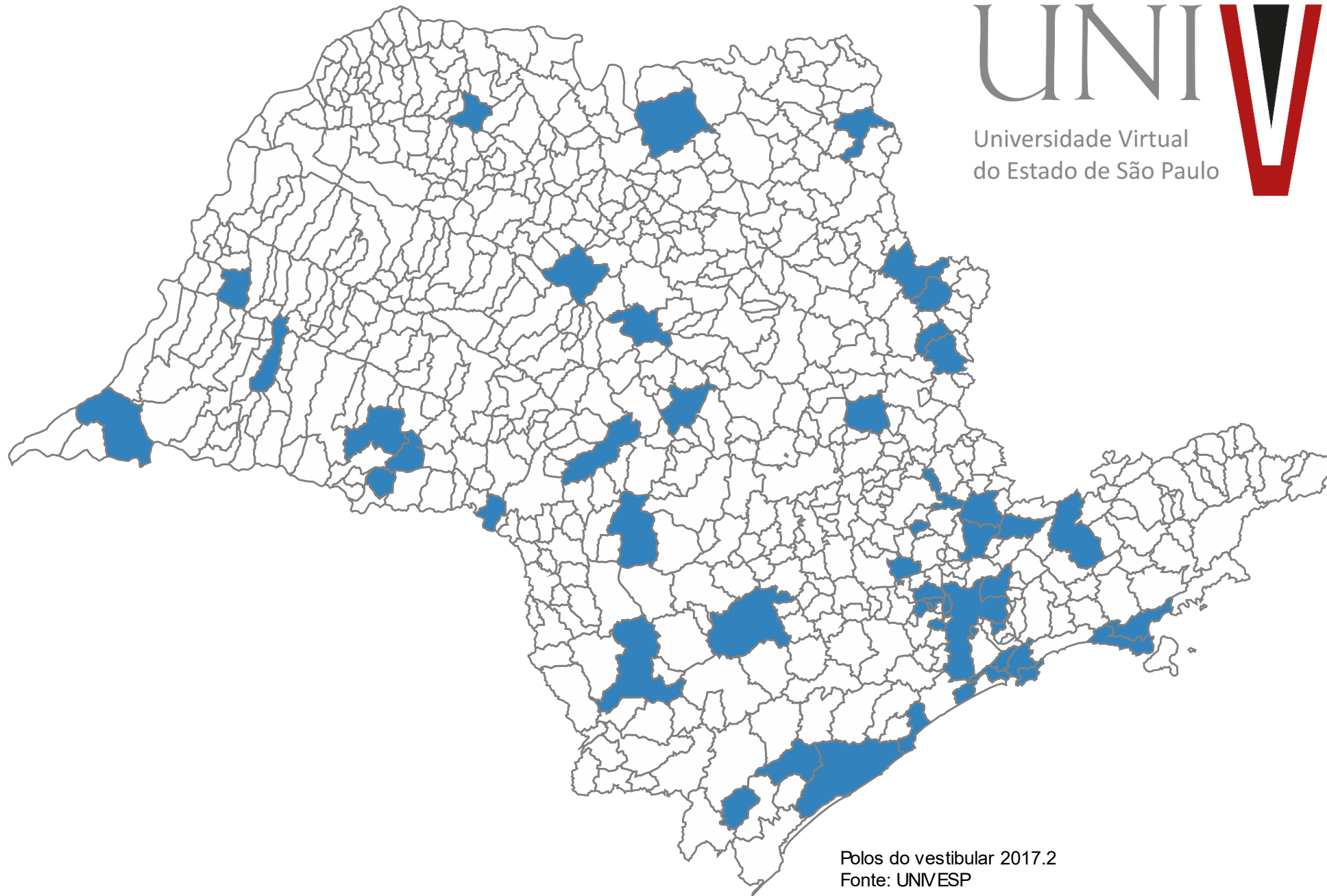
University growth in the last years

2014-2



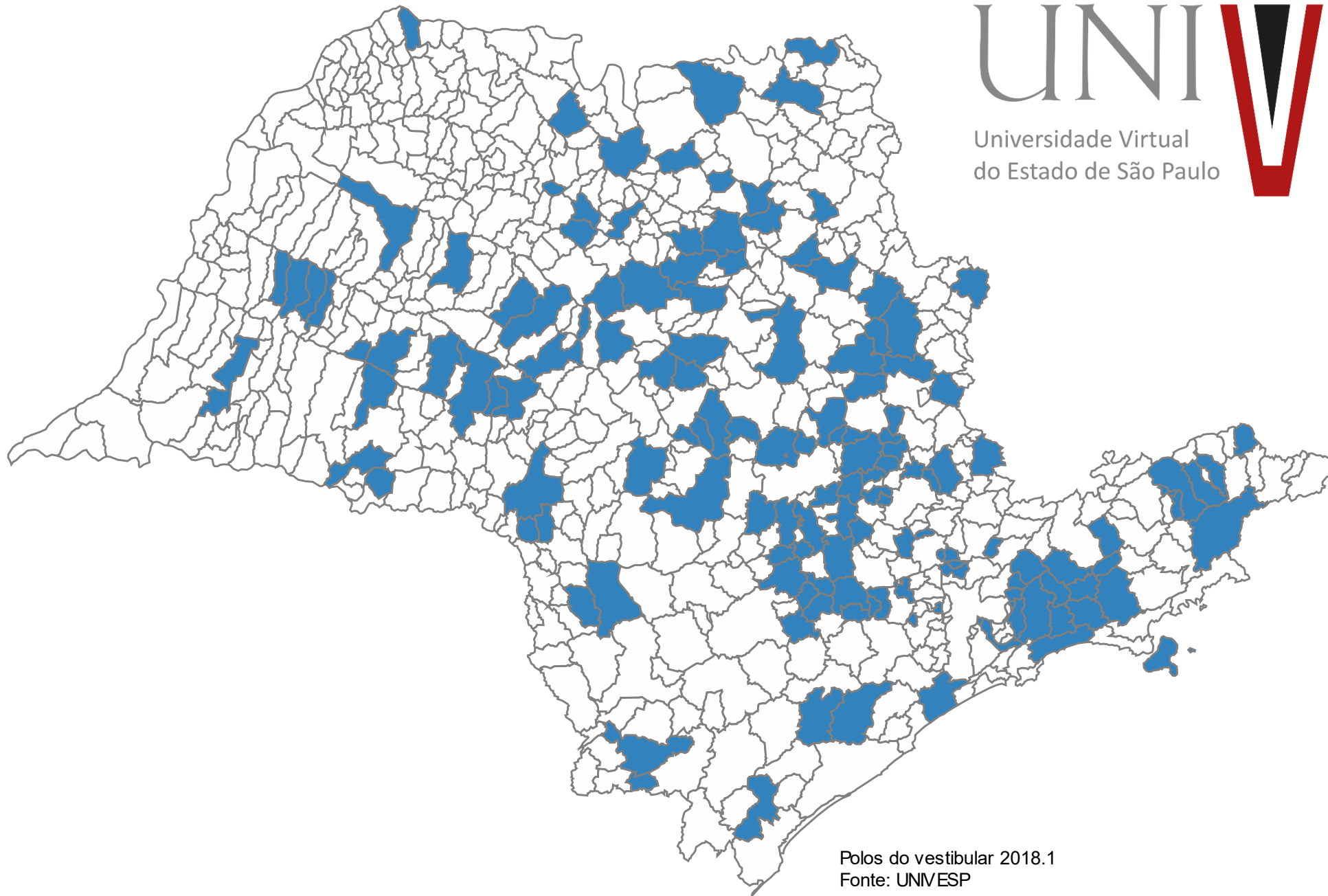
Polos do vestibular 2014
Fonte: UNIVESP

2017-2



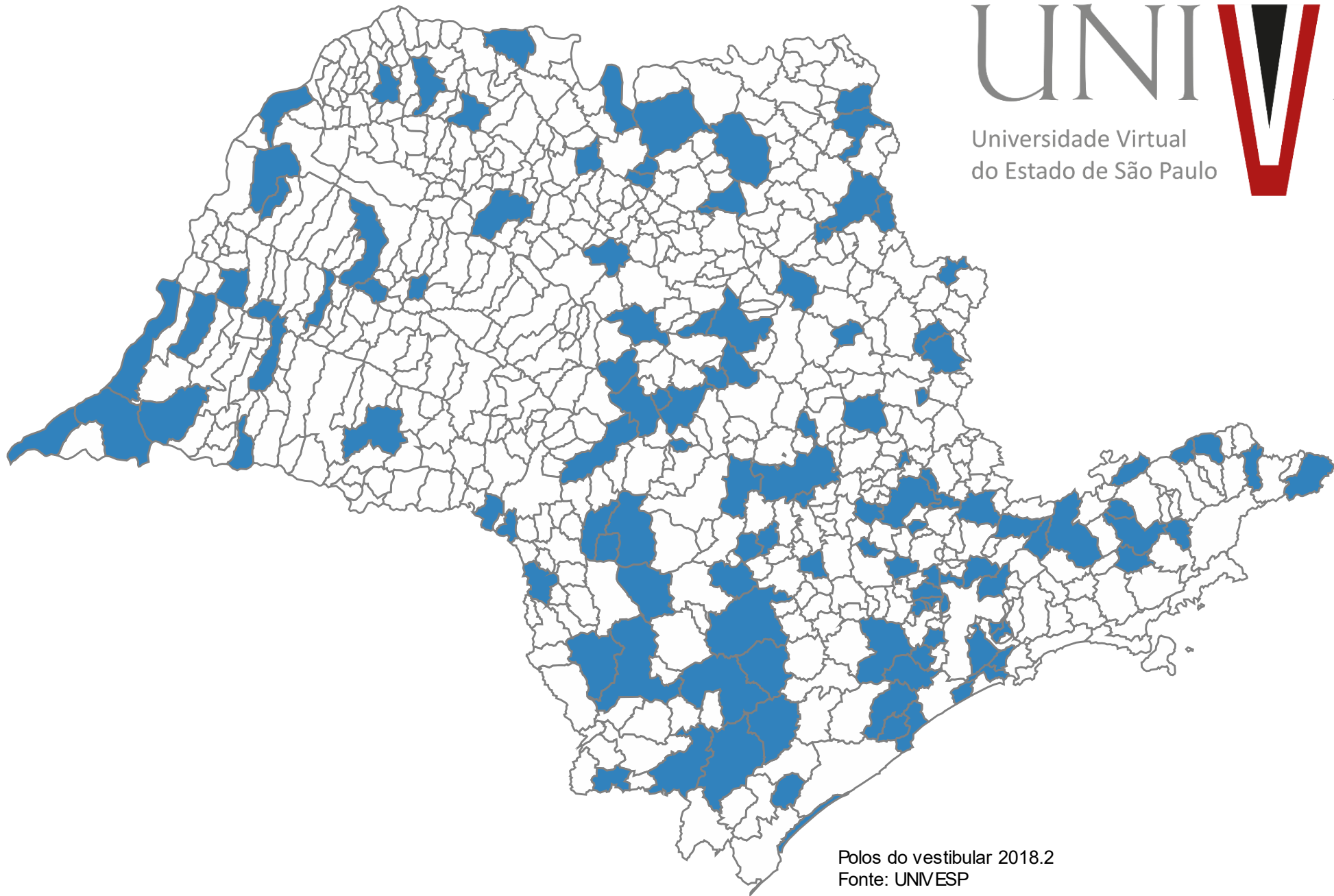
Polos do vestibular 2017.2
Fonte: UNIVESP

2018-1



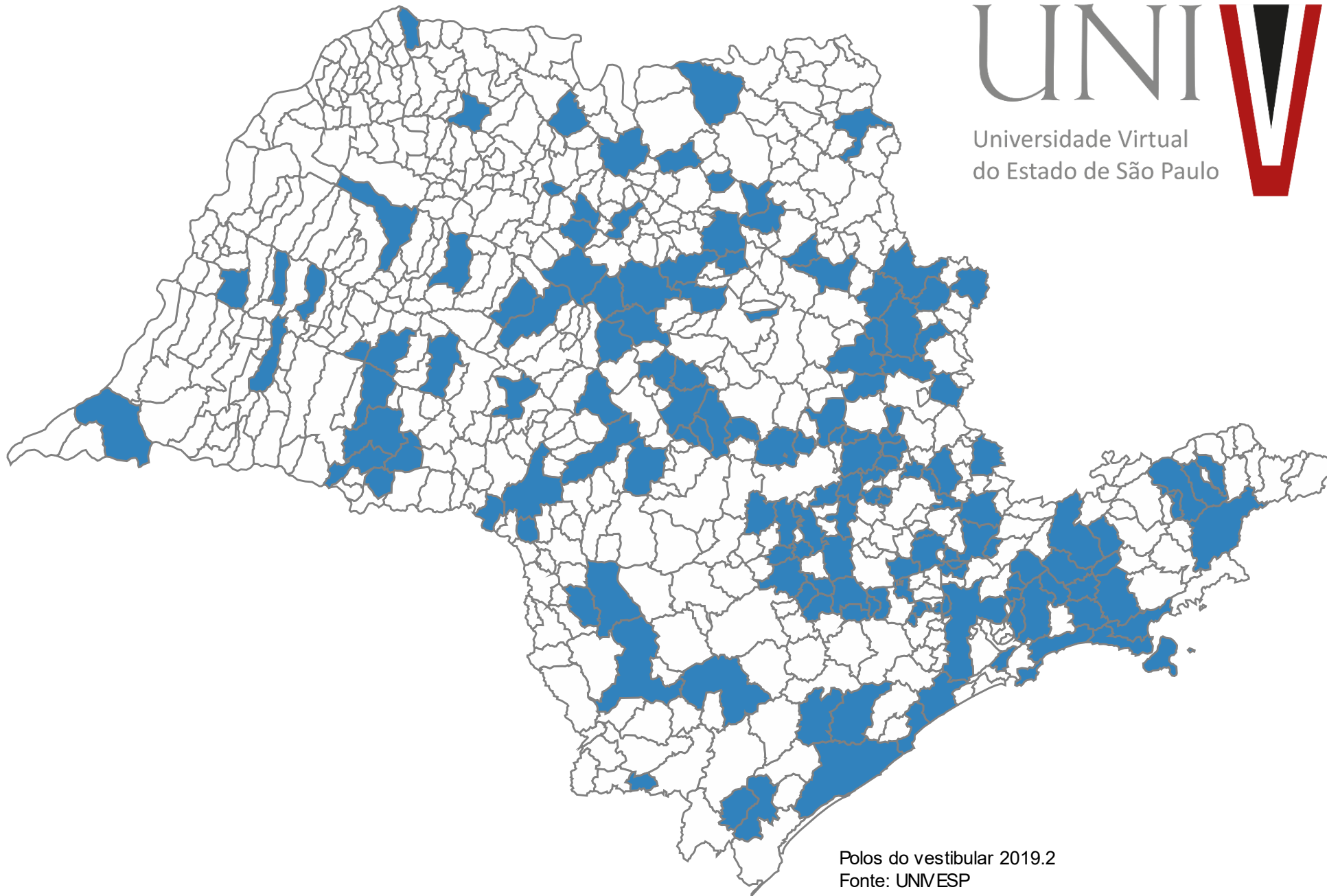
Polos do vestibular 2018.1
Fonte: UNIVESP

2018-2



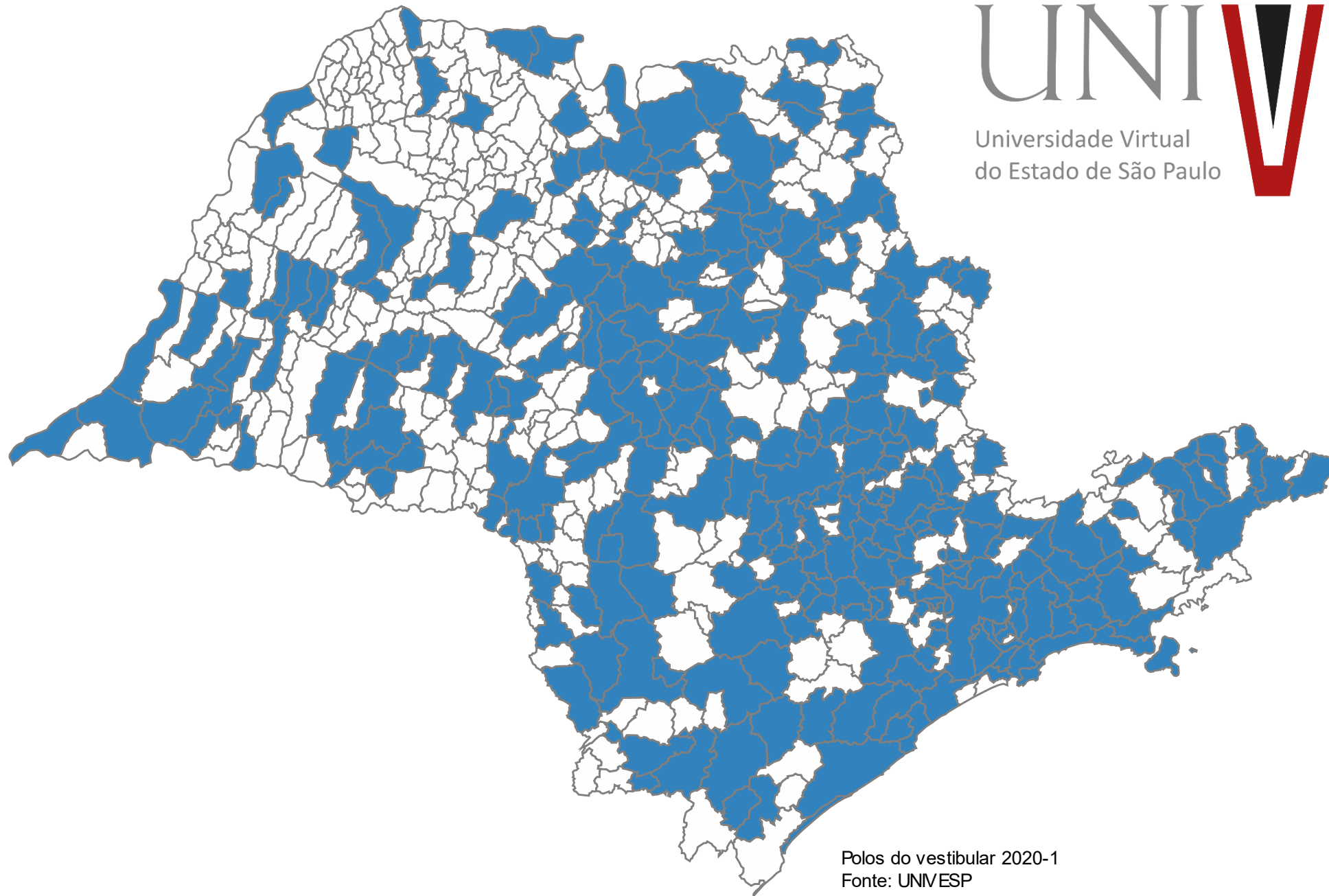
Polos do vestibular 2018.2
Fonte: UNIVESP

2019-2



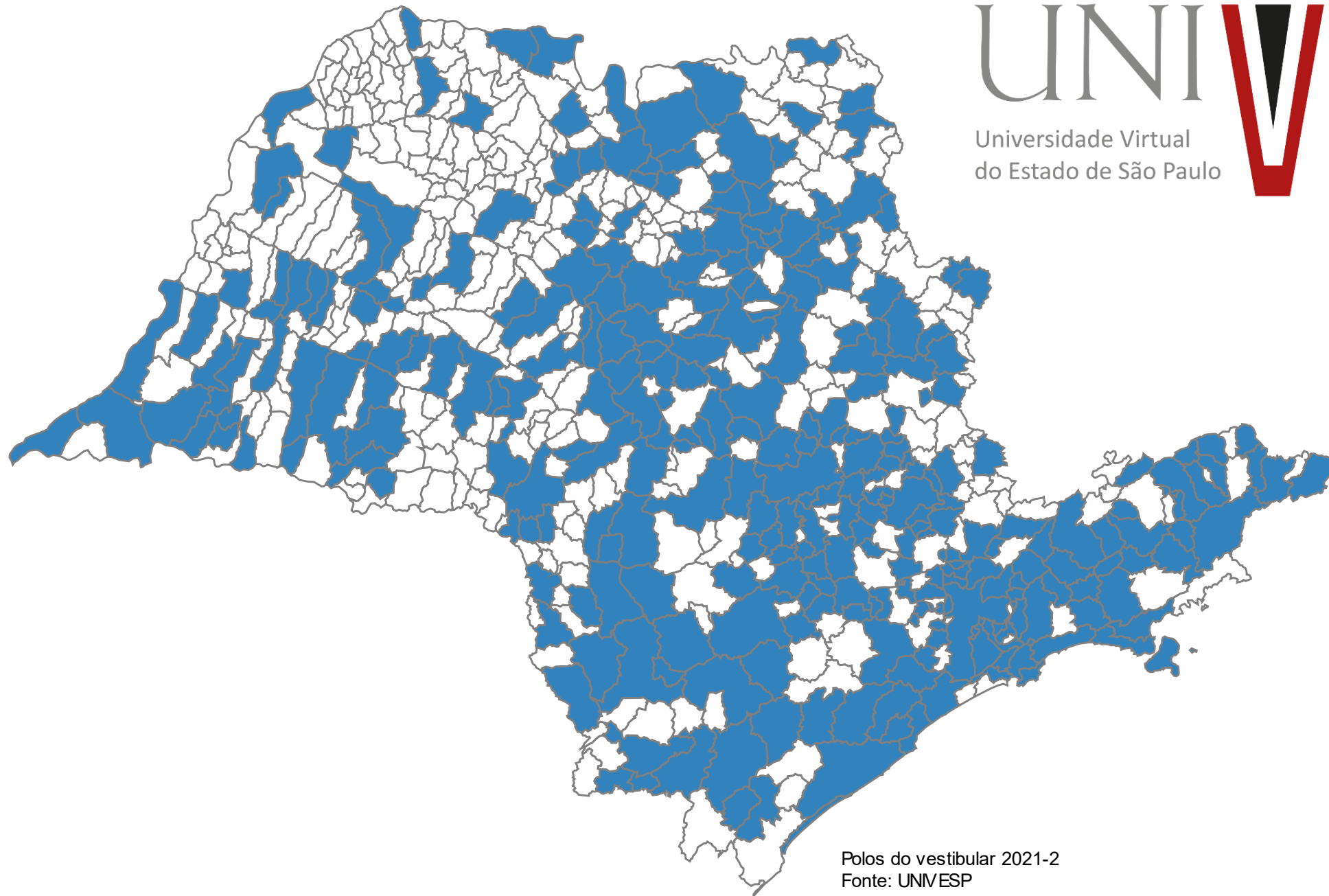
Polos do vestibular 2019.2
Fonte: UNIVESP

2020-1



Polos do vestibular 2020-1
Fonte: UNIVESP

2021-2



Polos do vestibular 2021-2
Fonte: UNIVESP

What changed during covid-19?

What changed during covid-19?



Local sites



On-site tests



Internet
access



Access to
computers



Main office



UNIVESP TV



Local sites



374

In 325 distinct
cities

- We obeyed all Federal, State and City laws and restrictions
- All local sites were closed in the beginning of the pandemic
- We faced three key challenges
 - On-site Tests
 - Computer laboratories
 - Local support for students



On-site tests



120,000

Tests applied
each bimester

- It is a regulatory requirement to have at least one on-site test per discipline
- We closed on Friday and had a test scheduled to the next Monday
- We postponed 2 weeks this first test to
 - Setup an online system
 - Check and validate student local infrastructure
 - Redesign all paper-test layouts to the online setup
 - Integrate the online setup with our grading system



Internet access



<1%

Of students
did not have
any kind of
access

- It is a regulatory requirement to have at least one on-site test per discipline
- We closed on Friday and had a test scheduled to the next Monday
- We postponed 2 weeks this first test to
 - Setup an online system
 - Check and validate student local infrastructure
 - Redesign all paper-test layouts to the online setup
 - Integrate the online setup with our grading system



Access to computers



<1%

Of students
did not have
any kind of
access

- We have computer laboratories in all local sites
- Not all students had computer at home
- Some computers are old
- We supported them by
 - All content were already designed to be used in tablets and phones
 - New tests already available for mobile devices
 - We still face the case of more than one student in a home with one single computer
 - We synched our open TV channel with the online content

Main office



91

Employees
moved to
home office

- Government procedures were still in paper
- Gradually moved some of the tasks to online
- Used our cars and drivers only for critical documents
- Meanwhile we implanted an online system



UNIVESP TV



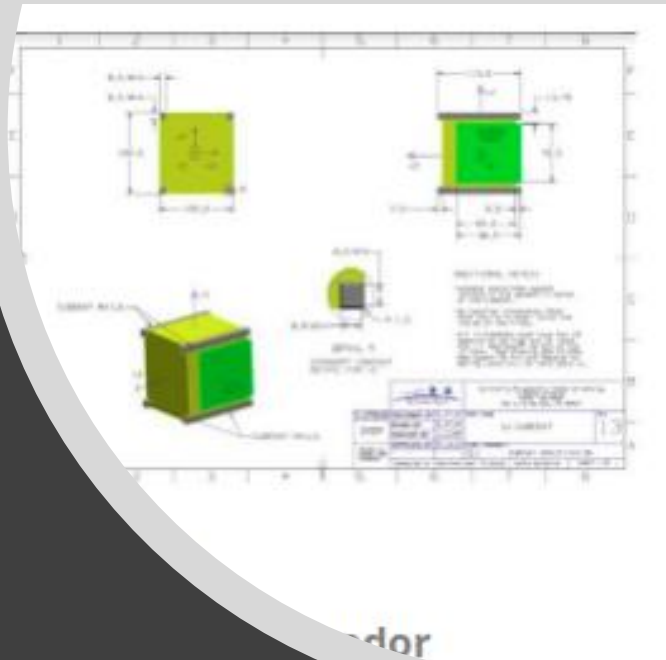
1MM

Subscribers on
YouTube

- We synched the TV and LMS content
- New schedules every other month
- Prepared a new studio to start recording as soon as possible safely
- We also shared our TV space for K-12 educational content

UNIVESP TV





Student moved to
online projects



27/08/20

Estudantes de Engenharia

External actions



Univesp

Educação a Distância

Para quem quiser estudar sem sair de casa, a universidade disponibiliza quase **300 disciplinas** e mais de **8 mil vídeos** no canal da **Univesp TV**, no YouTube.

Acesse: integra.univesp.br



Univesp TV transmitirá conteúdo educativo voltado ao Ensino Fundamental da Rede Estadual Paulista



Univesp e *Commonwealth of Learning* buscam soluções para o aprendizado na pandemia

Univesp é parceira da Unesco no combate ao COVID-19



External actions

realização
somos todos consed 70º ANIVERSÁRIO UNIDIME

**Lançamento
Prêmio Gestão
Escolar 2020**
Dia 16/6 às 16h30
na página facebook.com/consed

Live com
Eduardo
Shinyashiki

patrocínio
Fundação Itaú para Educação e Cultura
apelo
BRITISH COUNCIL
UNIVESP
Fundação Santillana

**PROGRAMA
AUTOESTIMA**

**Via Rápida
Virtual**

Cursos
Lógica de Programação
Banco de Dados
Desenvolvedor Web
Desenvolvedor Mobile
Gestão Administrativa
Planejamento Empresarial
Finanças para Empresas
Espanhol Básico

Inscrições até 17/05 pelo site:
www.viarapida.sp.gov.br

via rápida
UNIVESP
SÃO PAULO GOVERNO DO ESTADO
Secretaria de Desenvolvimento Econômico

Undergrad

Eixo de Licenciaturas (Pedagogia, Letras, Matemática, Biologia, Química, Física)
Eixo de Computação (Engenharia de Computação, Bacharelado em Tecnologia da Informação, Bacharelado em Ciência de Dados)
Engenharia de Produção e Gestão Pública

48.853 Students

**Post-graduate
Empreendedorismo e
Inovação Tecnológica
nas Engenharia**
(especialização - CREA,
UNIVESP e UNESP)

1.255 Students

**Post-graduate
Formação Didático-
Pedagógico para cursos na
modalidade a distância**
(Especialização).

1.042 Students

51.150

215.069

**Platform
UNIVESP**



7.921 Students



(Governo do Estado de SP, SES-SP, SDE,
SECOM, Fundo Social, Instituto de Psicologia
da USP, Sebrae-SP, IPT, Prodesp,
COSEMS/SP e UNIVESP)

503 Students



(SecDPcd)

599 Students



206.046 Students

**TOTAL
266.219**

2021 new student profile



75%

First university
generation in the
family



82%

Are older than 25
years



82%

Studied in public
schools



80%

Only applied to
UNIVESP



37%

Black or Native
Brazilians



79%

Work to provide
for their family



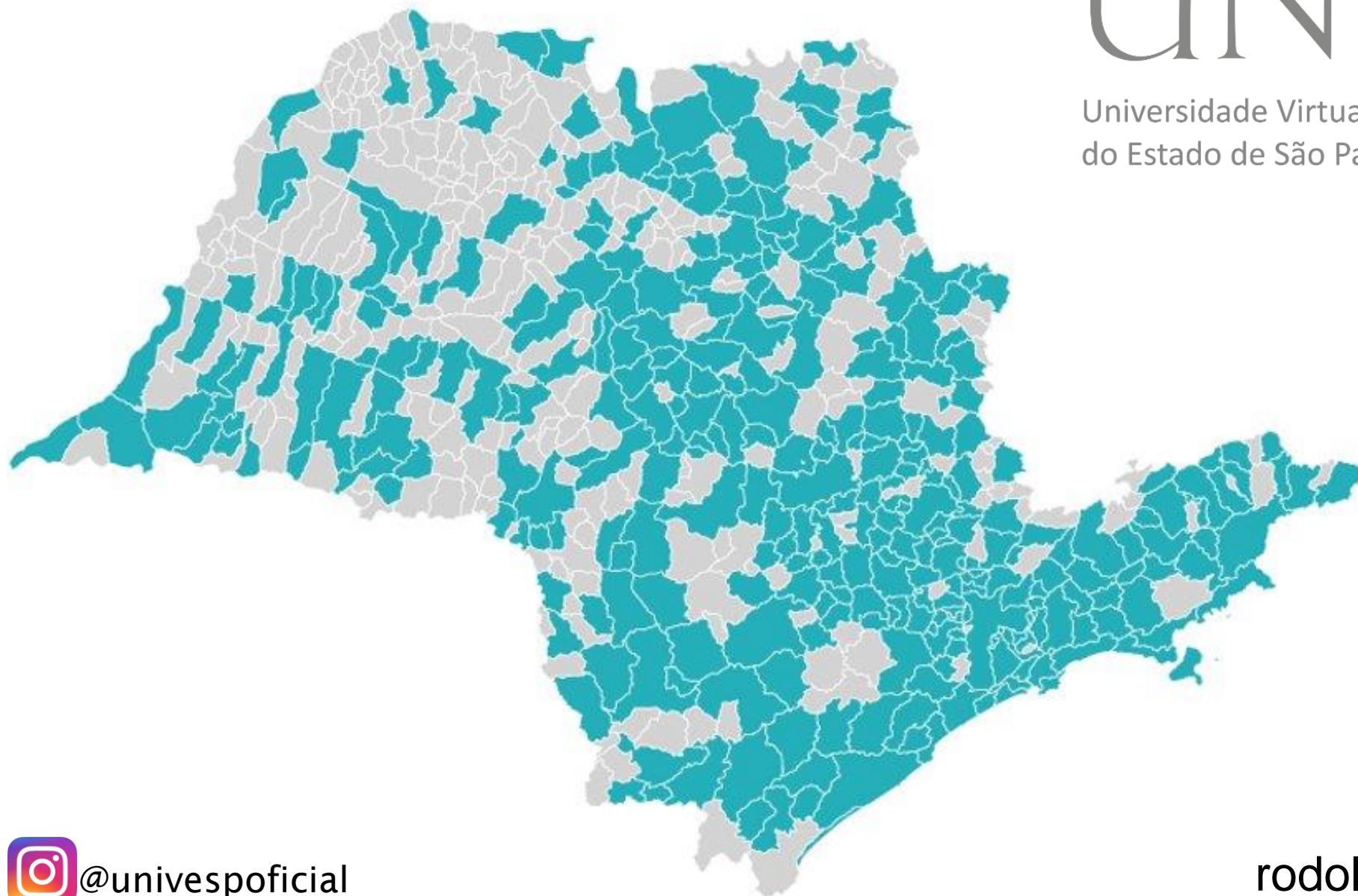
28%

Are the only
provider to their
family



36%

Are students in
requalification



Rodolfo Azevedo
President
rodolfo.azevedo@univesp.br

